

INSTALLATION INSTRUCTIONS FOR TRUFLUSH MANUAL CLOSET AND URINAL FLUSHOMETERS



TruFlush Models:

TRF 156-1.6

TRF 156-1.28

TRF 196-0.5

TRF 196-0.25

TRF 196-0.125

LIMITED WARRANTY

Unless otherwise noted, Sloan Valve Company warrants this product, manufactured and sold for commercial or industrial uses, to be free from defects in material and workmanship for a period of three (3) years (one (1) year for special finishes, SF faucets, PWT electronics and 30 days for PWT software) from date of first purchase. During this period, Sloan Valve Company will, at its option, repair, replace, or refund the purchase price of any product which fails to conform with this warranty under normal use and service. This shall be the sole and exclusive remedy under this warranty. Products must be returned to Sloan Valve Company, at customer's cost. No claims will be allowed for labor, transportation or other costs. This warranty extends only to persons or organizations who purchase Sloan Valve Company's products directly from Sloan Valve Company for purpose of resale. This warranty does not cover the life of the batteries.

THERE ARE NO WARRANTIES WHICH EXTEND BEYOND THE DESCRIPTION ON THE FACE HEREOF. IN NO EVENT IS SLOAN VALVE COMPANY RESPONSIBLE FOR ANY CONSEQUENTIAL DAMAGES OF ANY MEASURE WHATSOEVER.

PRIOR TO INSTALLATION

This valve is designed for new construction or where there is easily accessed plumbing for the fixture and the valve.

This valve is designed for minimum six inch (153 mm) wall space depth.

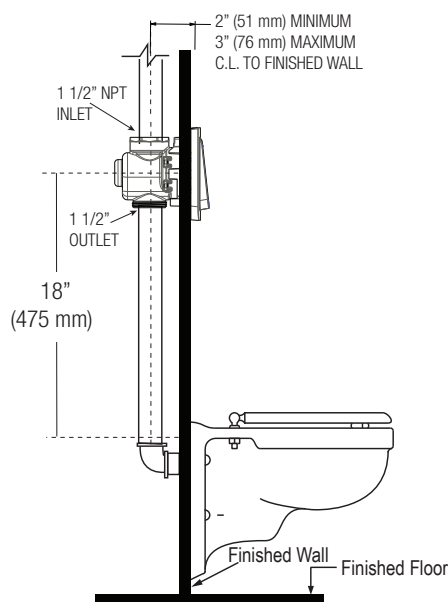
Distance from center of the valve (inlet or outlet pipe) to the finished surface of the wall can vary from 2"-3" (51-76 mm).

Wall plate opening must be minimum of 4" x 4" (102 x 102 mm) to maximum of 5.75 x 5.75" (to be confirmed). Mud plate is provided and must accompany valve for proper installation. Mud plate is removed after wall is finished.

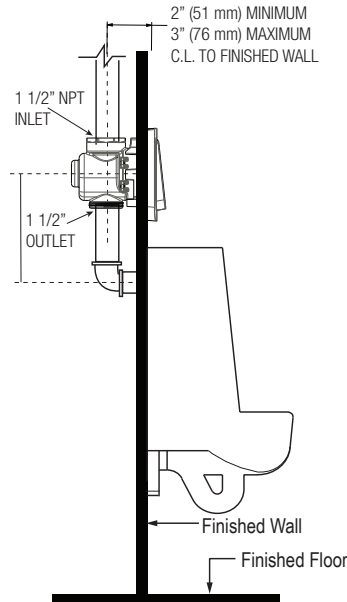
TOOLS REQUIRED FOR INSTALLATION

• Smooth-jawed wrench (at least 2") • Phillips screwdriver • 5/64" hex wrench (supplied) • Wall plate depth guide- (supplied) • Removal tool- (supplied)

ROUGH-IN

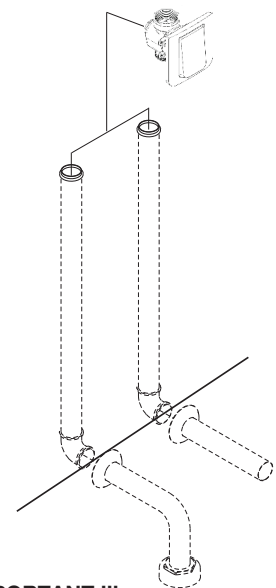


CLOSET



URINAL

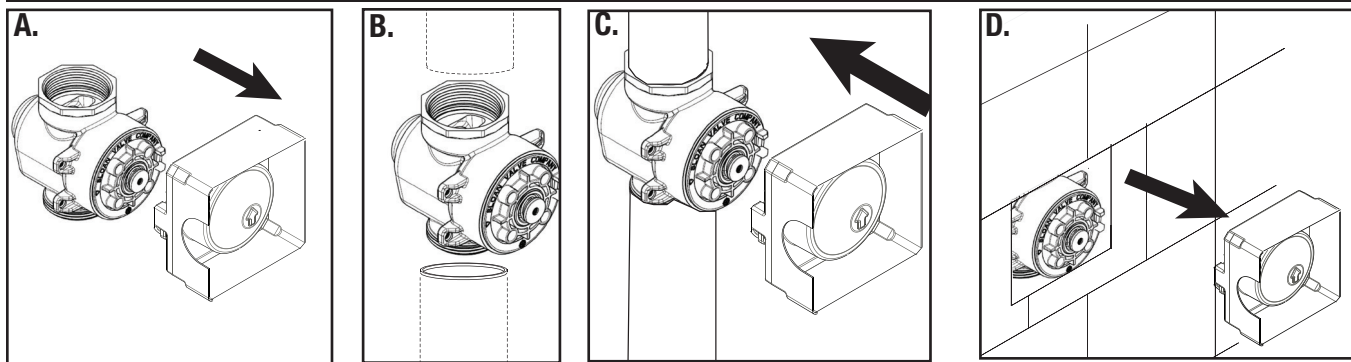
NOTE : Flush Connections shown in dotted lines not included.



!!! IMPORTANT !!!

WITH THE EXCEPTION OF INLET, DO NOT USE PIPE THREAD SEALANT OR PLUMBING GREASE ON VALVE COMPONENTS OR COUPLINGS!

1. CONNECT FLUSHOMETER



A. Remove mud plate and save for later use - **DO NOT DISCARD**

PRIOR TO CONNECTING, MAKE SURE SUPPLY LINES ARE FLUSHED OUT- DEBRIS CAN CAUSE VALVE TO MALFUNCTION OR DAMAGE CAN ENSUE

B. Connect inlet pipe to top of flushometer, tighten securely with Fixed jaw wrench. Connect fixture flush connection to bottom of flushometer, tighten securely

C. Reinstall mud plate to valve. Finish the wall

D. Remove mud plate and discard

NOTE. Wall plate opening must be minimum of 4" x 4" (102 x 102 mm) to maximum of 5.75 x 5.75"

2. ADJUST CONTROL FLOW

If supply line was flushed and is clean of debris, proceed to step **P**.

If supply line was not previously flushed, follow steps **A-Q**.

Valve is shipped with the flow adjustment turned off.

A. Ensure activation assembly is turned fully clockwise to make sure water is off

B. Push plunger screw in center to relieve pressure

C. Remove orange safety ring by squeezing pins together

D. Grab with fingers or pliers and pull out activation assembly. Do not rotate to avoid turning water on!

E. Remove piston by pulling it straight out

F. Reinstall activation assembly and press until fully seated

G. Reinstall orange safety ring securely

H. Using tool, (Screwdriver or wrench) turn activation assembly counter clockwise slowly to open flow of water to flush the lines- careful not to overflow the fixture

I. Once lines are flushed clear, turn activation assembly clockwise to shut water flow off

J. Push button/plunger in center to relieve pressure

K. Remove orange safety ring by squeezing pins together

L. Grab with fingers or pliers and pull out activation assembly (possible removal tool) Do not rotate to avoid turning water on!

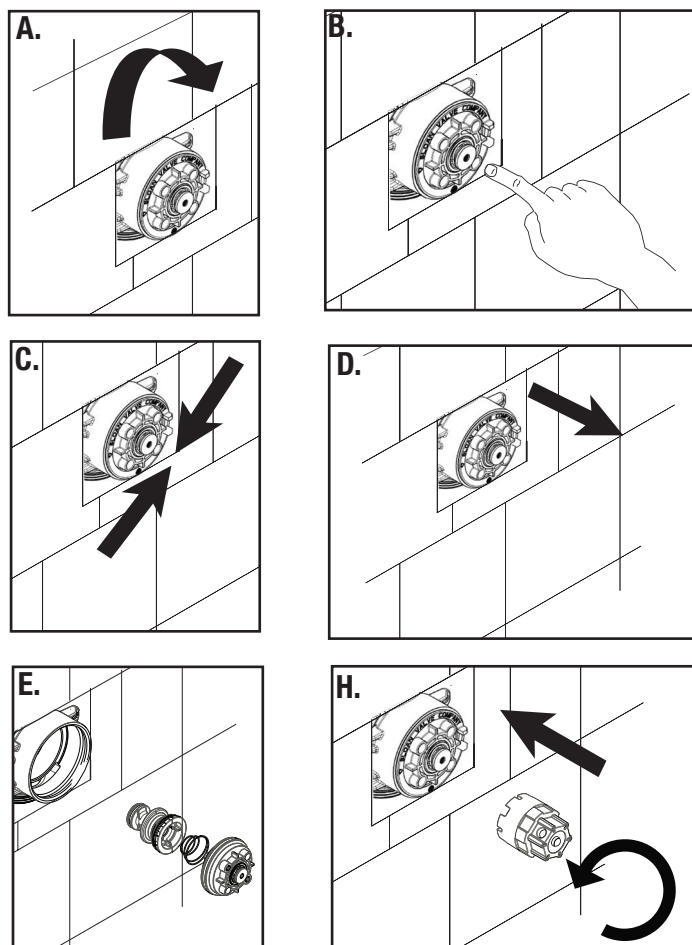
M. Reinstall piston- insert colored end first until fully seated

N. Reinstall activation assembly and press until fully seated

O. Reinstall orange safety ring securely

P. Using tool (screwdriver or wrench), turn activation assembly slowly counterclockwise to open flow of water

Q. Push plunger screw to activate flush and adjust water flow as needed by rotating activation assembly (clockwise to lessen flow and counter clock wise to increase flow)



3. INSTALL BUTTON/BRACKET ASSEMBLY

A. Retrieve button/bracket assembly from box

B. Lift up button by releasing the snap feature and lift button up to 90 degrees until it locks in up position

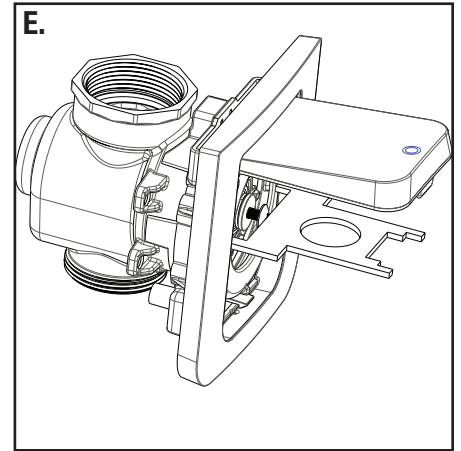
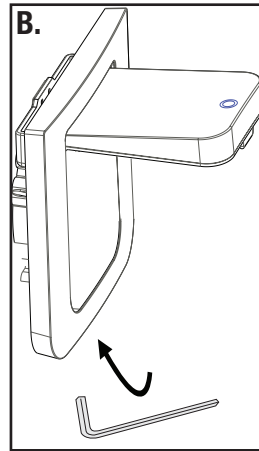
C. Mount black wall bracket to valve, centering wall bracket to valve. Secure wall bracket evenly with three screws provided until bracket flush with wall.

D. Slide chrome wall plate over button and wall bracket and secure to black bracket with two screws provided

E. Choose one of three plunger screws provided and thread into plunger. Using depth guide provided, adjust depth of plunger screw until screw touches depth guide (use provided alternate length screws if necessary)

F. Rotate button down until it snaps/locks into place

G. Test flush by pushing button (make sure button is not pushing screw when in resting position)



TROUBLESHOOTING GUIDE

1. Flushometer does not function (no water/flush).

- A.** Ensure water supply to valve is turned on.
- B.** Shut off sleeve is in closed position. Turn counterclockwise to open water flow.
- C.** Plunger screw is not adjusted properly. Adjust screw using depth guide.

2. Volume of water is not sufficient to evacuate the bowl.

- A.** Shut off sleeve is not open wide enough. Adjust shut off sleeve for desired delivery of water volume.
- B.** Urinal piston parts installed in a Closet flushometer. Replace piston with proper Closet gpf piston (1.6/6.0 Lpf or 1.28/4.8 Lpf).
- C.** Water supply volume or pressure is inadequate (low). If the fixture does not siphon or evacuate the bowl, steps must be taken to increase the water supply pressure and/or volume. Contact the fixture manufacturer for minimum water supply requirements of the fixture.
- D.** Plunger screw is not adjusted properly. Adjust screw using depth guide.

3. Flushometer closes off immediately.

- A.** Urinal piston parts installed in a Closet flushometer. Replace piston with proper Closet gpf piston (1.6/6.0 Lpf or 1.28/4.8 Lpf).
- B.** Piston lip seal may be damaged or worn. Replace with new correct gpf/Lpf piston.
- C.** Plunger screw is not adjusted properly. Adjust screw using depth guide.

4. Length of flush is too short (Short Flush).

- A.** Incorrect piston is installed in Flushometer; for instance, Urinal assembly inside a Closet Flushometer, or High Efficiency assembly inside a higher consumption fixture. Determine the flush volume required by the fixture and replace with proper gpf/Lpf piston. Use valve label and markings on fixture for reference.
- B.** Piston lip seal may be damaged or worn. Replace with new correct gpf/Lpf piston.
- C.** Plunger screw is not adjusted properly. Adjust screw using depth guide.

5. Length of flush is too long (Long Flush) or continuous.

- A.** Metering bypass hole in piston is clogged. Remove the piston O-ring from groove and wash under running water. Replace piston if cleaning does not correct the problem.
- B.** Supply line water pressure has dropped and is not sufficient to close the valve. Close shut off sleeve until pressure is restored.
- D.** Piston is damaged. Replace with new proper gpf/Lpf piston
- E.** Incorrect Piston is installed in Flushometer; for instance, Urinal assembly inside a Closet flushometer, or High Efficiency assembly inside a higher consumption fixture. Determine the flush volume required by the fixture and replace piston. Use valve label and markings on fixture for reference.

6. Chattering noise is heard during flush.

- A.** Reduce flow pressure by turning shut off sleeve clockwise.

CARE AND CLEANING

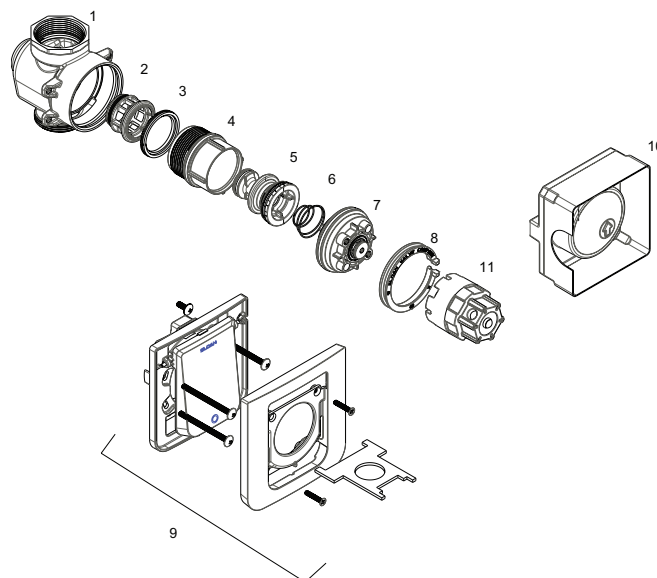
DO NOT use abrasive or chemical cleaners (including chlorine bleach) to clean Flushometers that may dull the luster and attack the chrome or special decorative finishes. Use ONLY mild soap and water, then wipe dry with clean cloth or towel. While cleaning the bathroom tile, protect the Flushometer from any splattering of cleaner. Acids and cleaning fluids will discolor or remove chrome plating.

PARTS LIST

Item No.	Part No.	Description
1	GBL-1	Valve Body
2	GBL-16	Main Seat Retainer
3	GBL-9	Main Seat
4	GBL-66-A	Shut off Sleeve Assembly
5	See Table	Piston Assembly
6	GBL-69	Conical Spring
7	See Table	Activation Assembly
8	GBL-19	Safety Collar
9	GBL-36-A	Wall Plate Assembly
10	GBL-29	Mud Plate
11	GBL-53	Adjusting Tool

Manufactured in the U.S.A by Sloan Valve Company under one or more of the following patents: U.S. Patents. 5,295,655; 5,542,718; 5,558,120; 5,564,460; 5,730,415; 5,865,420; 5,887,848; 5,967,182. Other Patents Pending.

Bak-Chek®, Para-Flo®, PERMEX®, Turbo-Flo®



PISTON PARTS LIST SELECTION GUIDE

Code No.	Part No.	Description	Piston Body Color	Flow Control Color
3340005	GBL-1005-A	1.6 gpf/6.0 Lpf TruFlush closet piston assembly	Natural	Green
3340006	GBL-1006-A	1.28 gpf/4.8 Lpf TruFlush closet piston assembly	Grey	Green
3340007	GBL-1007-A	0.5 gpf/1.9 Lpf TruFlush urinal piston assembly	Grey	Red
3340008	GBL-1008-A	0.25 gpf/1.0 Lpf TruFlush urinal piston assembly	Grey	Burgandy
3340009	GBL-1009-A	0.125 gpf.0.5 Lpf TruFlush urinal piston assembly	Grey	Pink

ACTIVATION ASSEMBLY SELECTION GUIDE

Code No.	Part No.	Description	Plunger Color
3340000	GBL-1000-A	1.6 gpf/6.0 Lpf closet activation assembly	Green
3340001	GBL-1001-A	1.28 gpf/4.8 Lpf closet activation assembly	Purple
3340002	GBL-1002-A	0.5 gpf/1.9 Lpf urinal activation assembly	Red
3340003	GBL-1003-A	0.25 gpf/1.0 Lpf urinal activation assembly	Burgandy
3340004	GBL-1004-A	0.125 gpf.0.5 Lpf urinal activation assembly	Pink

NOTE: The information contained in this document is subject to change without notice.

SLOAN • 10500 SEYMOUR AVENUE • FRANKLIN PARK, IL 60131
 Phone: 1-800-9-VALVE-9 or 1-800-982-5839 • Fax: 1-800-447-8329 • www.sloanvalve.com