

## INSTALLATION INSTRUCTIONS FOR TRUFLUSH ELECTRONIC DUAL FLUSH WALL PLATE



**TruFlush Model:**  
TRF 8936-CP

### LIMITED WARRANTY

Unless otherwise noted, Sloan India Pvt. Ltd warrants this product, manufactured and sold for commercial or industrial uses, to be free from defects in material and workmanship for a period of five (5) years and 1 Year- All Electronic & battery not covered in warranty from date of first purchase. During this period, Sloan India Pvt. Ltd will, at its option, repair, replace, or refund the purchase price of any product which fails to conform with this warranty under normal use and service. This shall be the sole and exclusive remedy under this warranty. Products must be returned to Sloan India Pvt. Ltd, at customer's cost. No claims will be allowed for labor, transportation or other costs. This warranty extends only to persons or organizations who purchase Sloan India Pvt. Ltd products directly from Sloan India Pvt. Ltd for purpose of resale. This warranty does not cover the life of the batteries.

**THERE ARE NO WARRANTIES WHICH EXTEND BEYOND THE DESCRIPTION ON THE FACE HEREOF. IN NO EVENT IS SLOAN INDIA PVT. LTD RESPONSIBLE FOR ANY CONSEQUENTIAL DAMAGES OF ANY MEASURE WHATSOEVER.**

### PRIOR TO INSTALLATION

This valve is designed for new construction or where there is easily accessed plumbing for the fixture and the valve.

This valve is designed for minimum six inch (152 mm) wall space depth. Distance from center of the valve (inlet or outlet pipe) to the finished surface of the wall can vary from 2"-3" (51-76 mm).

Wall plate opening must be of 5.6" x 5.6" (142 x 142 mm). Mud plate is provided and must accompany valve for proper installation. Mud plate is removed after wall is finished.

### TOOLS REQUIRED FOR INSTALLATION



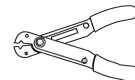
• Phillips screwdriver



• Adjusting tool (supplied)



• Flathead screwdriver .118"  
(3 mm or below)



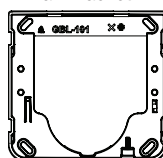
• Wire stripper tool

### ITEMS INCLUDED WITH THE PRODUCT

#### WALL PLATE BOX

1. Wall Bracket
2. Wall Plate
3. Sensor Assembly
4. Battery Pack
5. (4) Batteries
- 6.(4) #8-32 x 2 Screws
- 7.Allen Key
- 8.Installation instructions

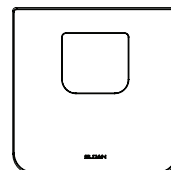
1. Wall Bracket



4. Battery Pack



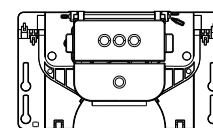
2. Wall Plate



5. (4) Batteries



3.PCB Assembly



6. (4) #8-32 x 2 Screws



7. Allen Key



8. Instructions

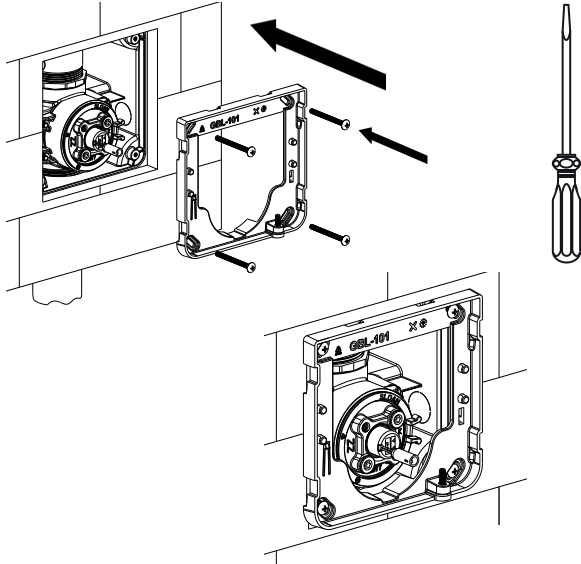


# 1. CONNECT FLUSHOMETER

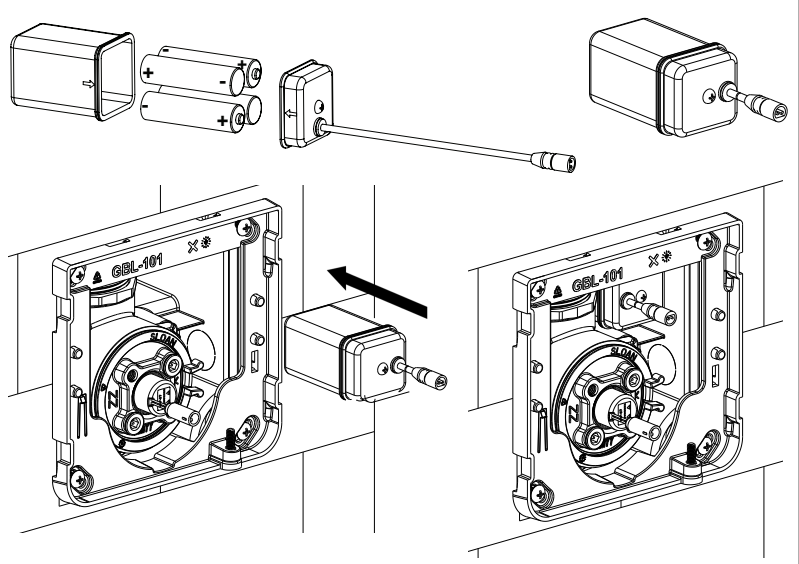
Refer Valve Assembly Installation Manual (08160054).

## 2. INSTALL WALL PLATE ASSEMBLY

1. Remove the mudguard by unscrewing the two screws and **discard the mudguard**
2. Mount the Wall Bracket to valve and secure it using the #8-32 x 2 Screws (Supplied).

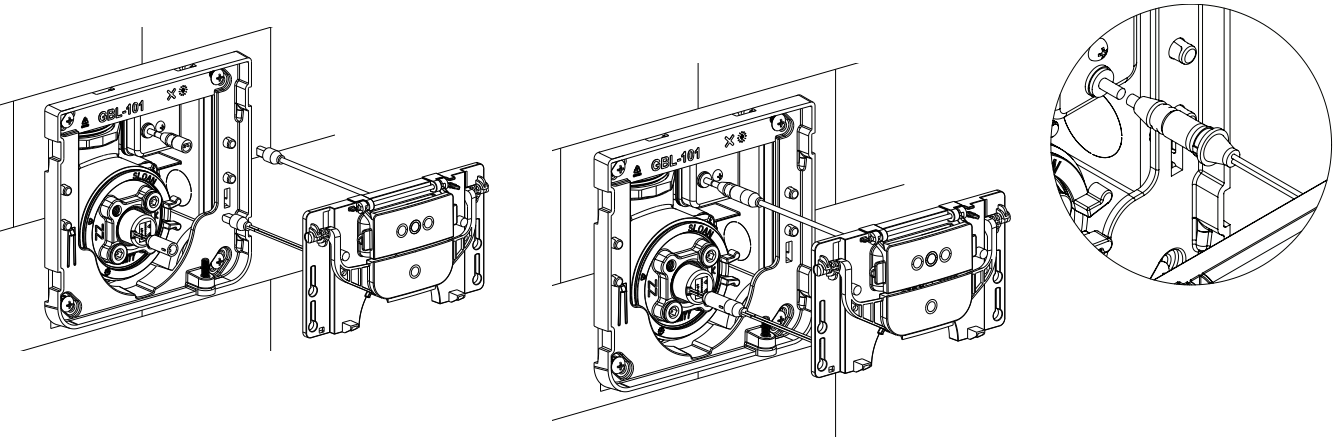


3. Open the battery package (supplied) by unscrewing the lid screw, insert the batteries (4Nos, Supplied) into the battery package as shown and close the lid by tightening the screw.
4. Insert the battery package on right side of valve as shown.



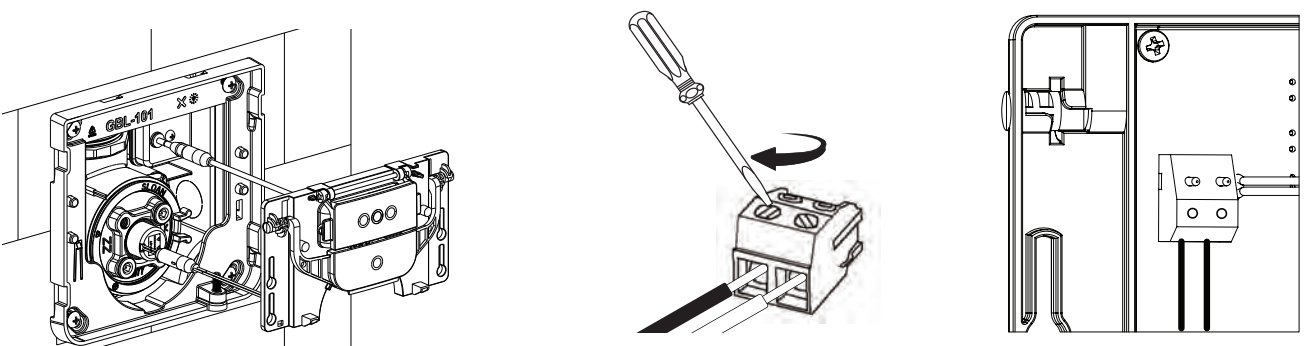
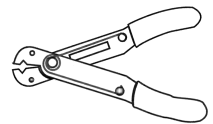
5. Connect the battery box black connector to black connector on PCB assembly, Connect Solenoid grey connector to grey connector on PCB assembly.

**NOTE: RED LED WILL START BLINKING WHEN POWER IS CONNECTED TO THE PCB ASSEMBLY**

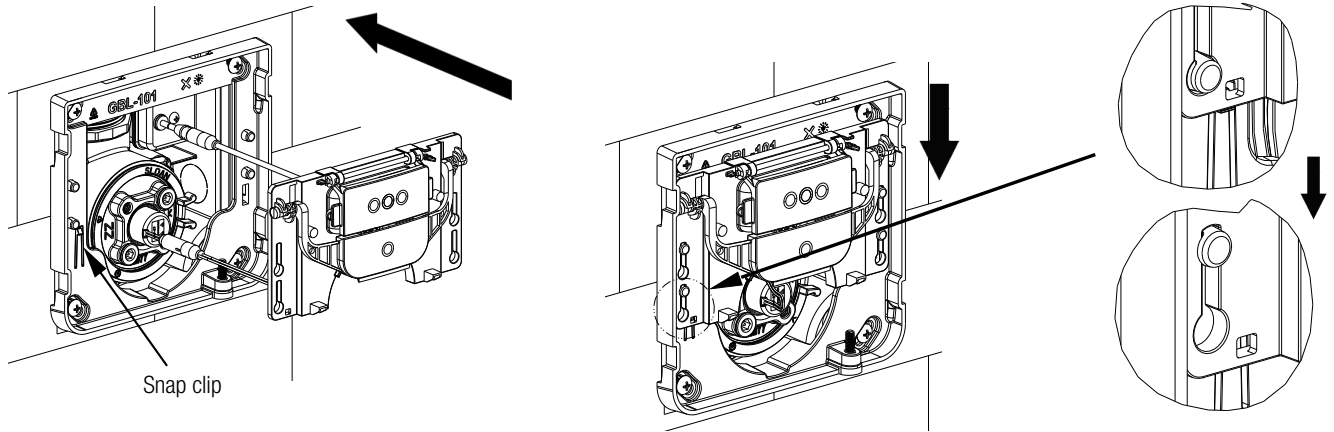


### !!! ONLY FOR HARDWIRE CONNECTION !!!

- 5a. Using the wire stripping tool strip, the ends of the transformer wire that was routed when installing the valve.
- 5b. Insert wire in blue terminal block and tighten the terminal screws.
- 5c. Connect the terminal block to the PCB assembly as shown.

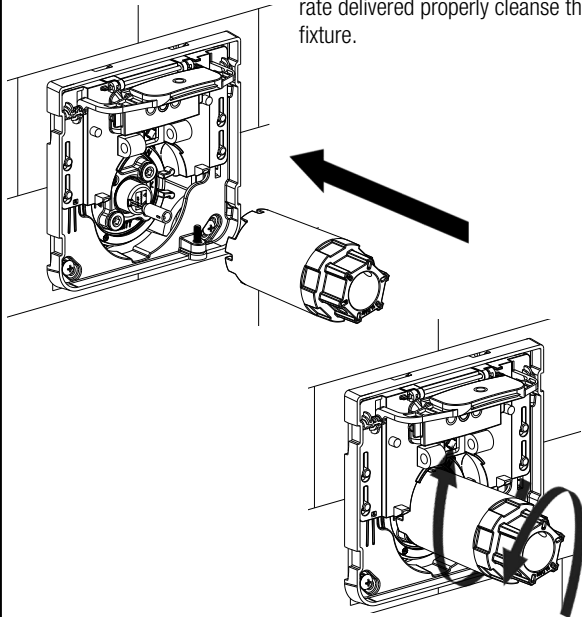


6. Align the 4 slots on the PCB Assembly with the mounting pegs on the Wall Bracket and slide the PCB assembly all the way down.



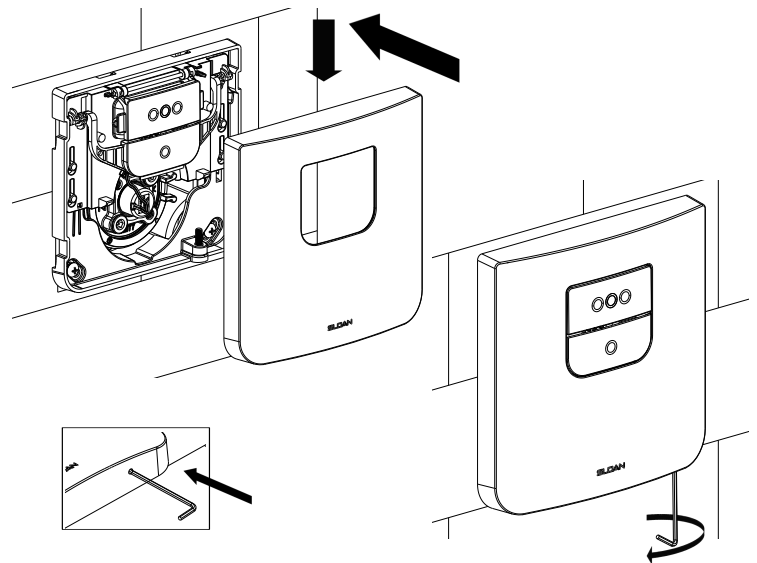
7. Disconnect the Solenoid Connector and lift the button as shown, Use the tool to turn the activation assembly **clockwise** (to lessen the flow) or **anticlockwise** (to increases the flow).
8. Reconnect the solenoid and check the flow by flushing, repeat

**step 7** to adjust the flow until the flow rate delivered properly cleanse the fixture.



9. Make sure the retaining screw is fully tightened, slide the PCB assembly all the way up and align the wall plate cutout with PCB assembly as shown.
10. Push the wall plate all the way in then slide the wall plate down.
11. Use the allen key (supplied) to unscrew the retaining screw until it touches the wall plate then make sure the wall plate is completed fixed.

**NOTE: DO NOT UNSCREW ANYMORE ONCE THE RETAINING SCREW TOUCHES WALL PLATE**



**!!! NOTE !!!**

**MAKE SURE SOLENOID CONNECTOR GOES THROUGH THE CENTER OF THE ADJUSTING TOOL TO AVOID DAMAGE TO THE CABLE.**

**!!! NOTE !!!**

**MAKE SURE FLUSHOMETER SOLENOID CONNECTOR IS DISCONNECTED FROM SENSOR ASSEMBLY EVERY TIME BEFORE ROTATING ACTIVATION ASSEMBLY.**

**!!! NOTE !!!**

**UNDER NO CIRCUMSTANCES SHOULD THE SOLENOID BE REMOVED OR ADJUSTED.**

**!!! IMPORTANT !!!**

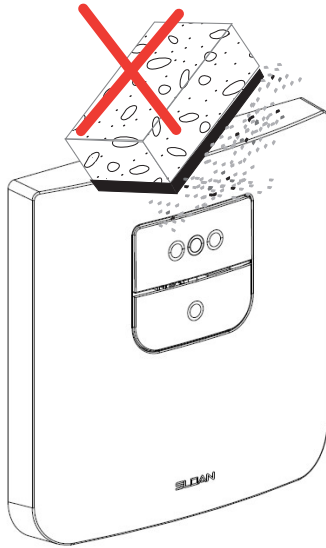
**THE FLUSHOMETER IS ENGINEERED FOR QUIET OPERATION. EXCESSIVE WATER FLOW CREATES NOISE, WHILE TOO LITTLE WATER FLOW MAY NOT SATISFY THE NEEDS OF THE FIXTURE. PROPER ADJUSTMENT IS MADE WHEN PLUMBING FIXTURE IS CLEANSED AFTER EACH FLUSH WITHOUT SPLASHING WATER OUT FROM THE LIP AND A QUIET FLUSHING CYCLE IS ACHIEVED.**

**!!! IMPORTANT !!!**

**THE ACTIVATION ASSEMBLY SHOULD NEVER BE OPENED TO THE POINT WHERE THE FLOW FROM THE VALVE EXCEEDS THE FLOW CAPABILITY OF THE FIXTURE. IN THE EVENT OF A VALVE FAILURE, THE FIXTURE MUST BE ABLE TO ACCOMMODATE A CONTINUOUS FLOW FROM THE VALVE.**

## CARE AND CLEANING

DO NOT use abrasive or chemical cleaners (including chlorine bleach) to clean Flushometers that may dull the luster and attack the chrome or special decorative finishes. Use ONLY mild soap and water, then wipe dry with clean cloth or towel. While cleaning the bathroom tile, protect the Flushometer from any splattering of cleaner. Acids and cleaning fluids will discolor or remove chrome plating.



**Valve Assembly Installation Manual (08160054), available on [www.sloan.in](http://www.sloan.in)**

**For complete listing of items available for repair, please consult Maintenance and Repair Guide.  
available on [www.sloan.in](http://www.sloan.in)**

Code No. 08160044

Rev. 1 (11/21)

**SLOAN INDIA PRIVATE LIMITED**

Manufactured by Sloan India Pvt. Ltd, patents pending.

© 2021 SLOAN

344, PHASE-II UDYOG VIHAR, GURGAON 122015 Phone: (+91) 124-6013300/33

Toll Free: 1800.123.3080 | [customercare@sloan.in](mailto:customercare@sloan.in) | [sloan.in](http://sloan.in) | copyright © 2021 Sloan All rights reserved